

BIKE & PEDESTRIAN MASTER PLAN

COLLINGSWOOD AND HADDON TOWNSHIP

COMMUNITY MEETING

JANUARY 22, 2020



PROJECT TEAM



WELCOME!

PURPOSE OF THE MEETING

We want your help developing a bicycle and pedestrian plan within Collingswood and Haddon Township that balances the needs of everyone – pedestrians, bicyclists, public transit riders, drivers, people with disabilities, seniors, and children.



That's my son learning to ride in Knight Park

WHY DO A PLAN FOR PEDESTRIANS?

- It is planning for everyone
- No matter what mode you use to go about your day, all of you are pedestrians at some point



WHY DO A PLAN FOR BICYCLISTS?

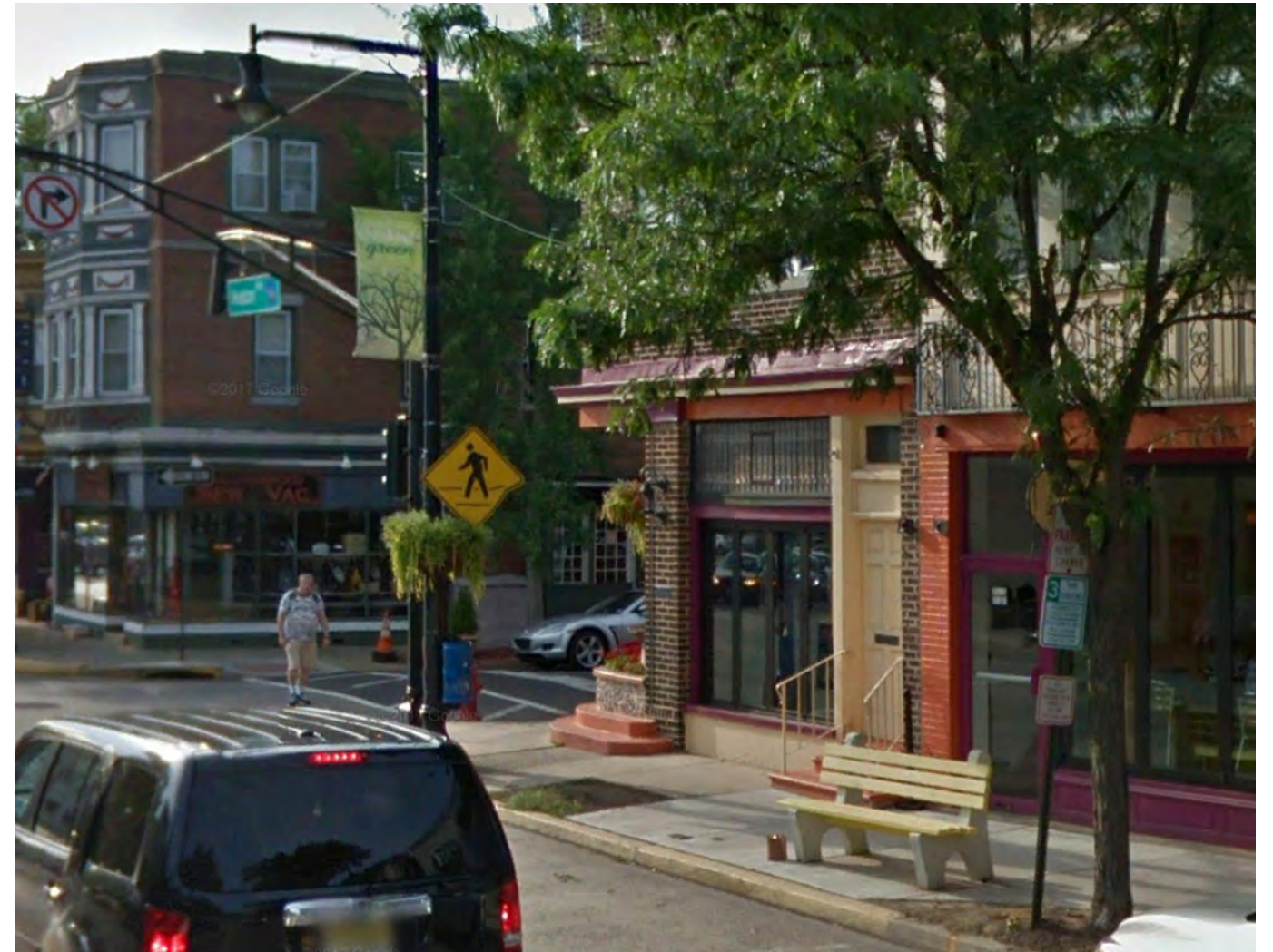
- Biking can be a quick and convenient way to go places
- There is a growing network of trails and places to go on a bike in the region



HOW DID WE GET HERE?

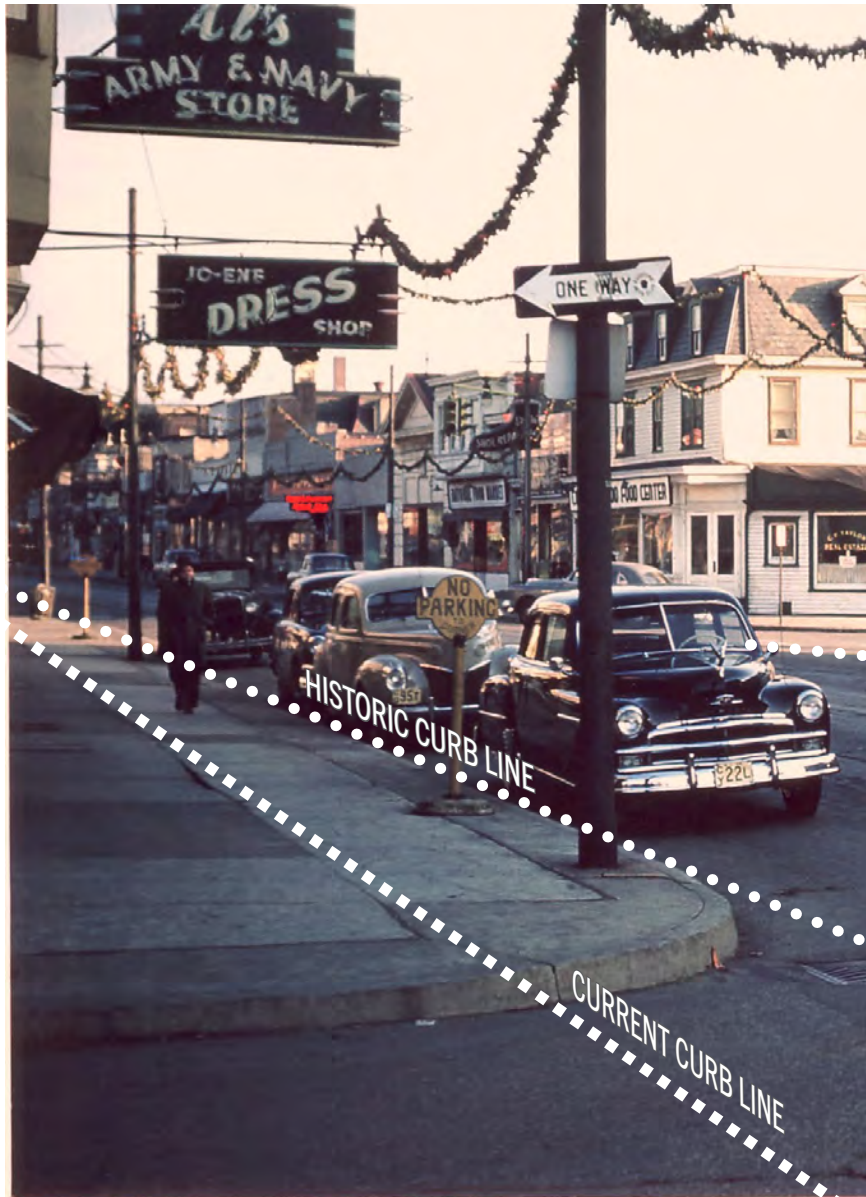


VIEW CIRCA 1940

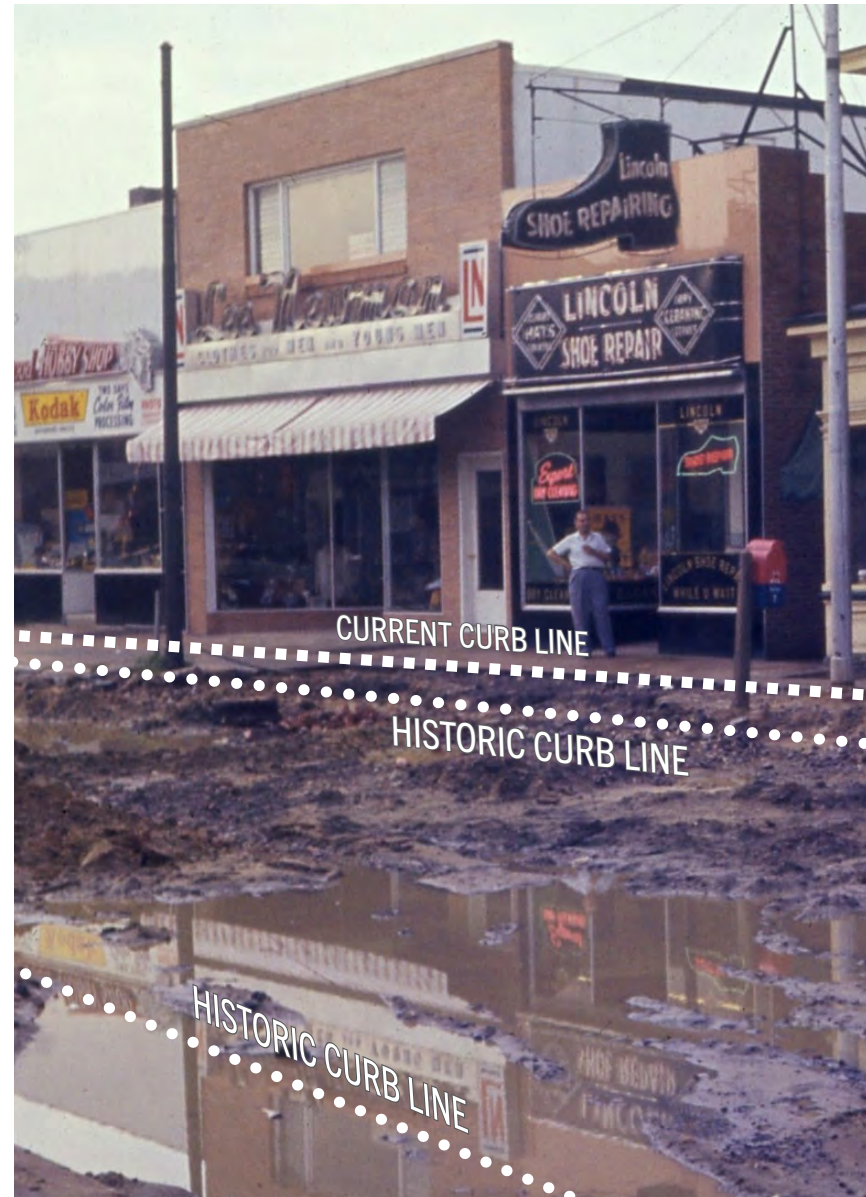


PRESENT DAY VIEW

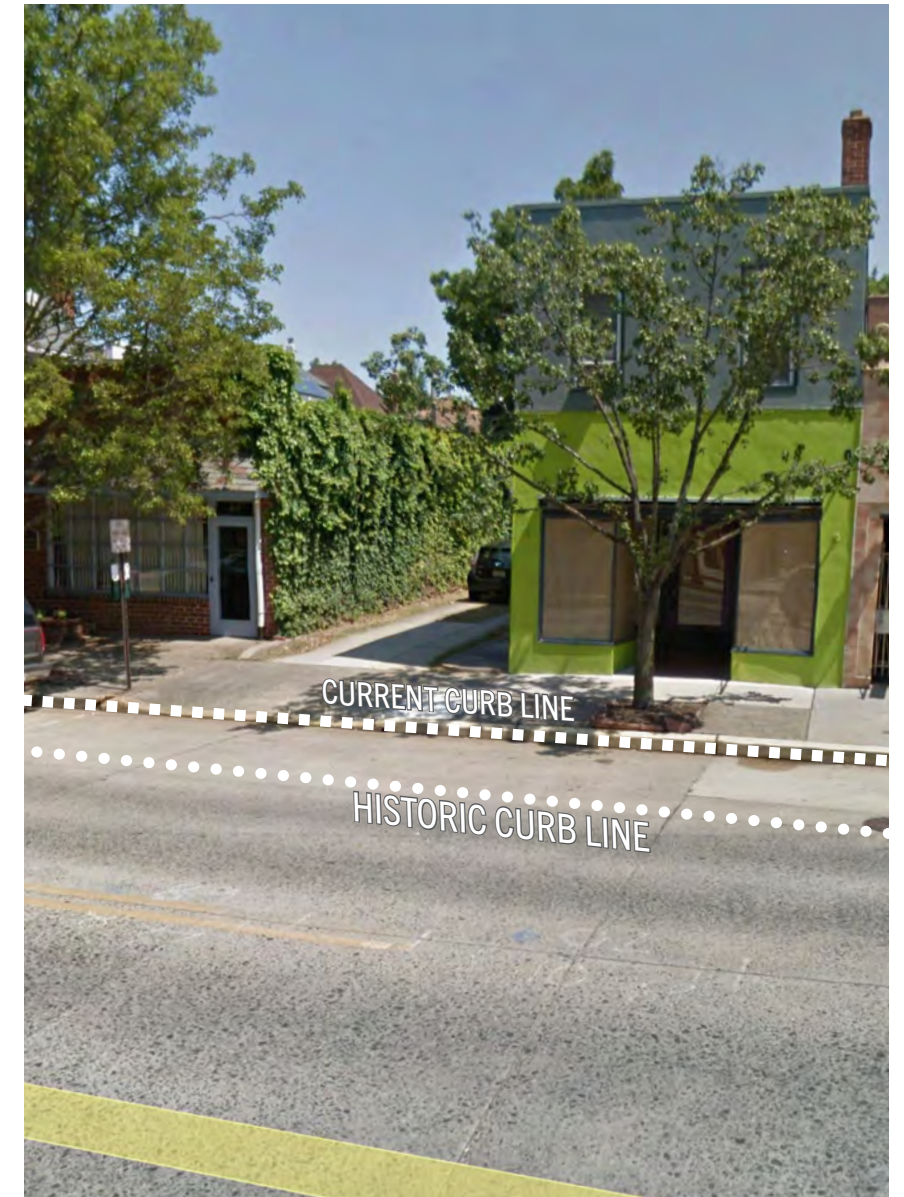
NORTHEAST CORNER OF HADDON AVE AND COLLINGS AVE



VIEW CIRCA 1938



VIEW UNDER CONSTRUCTION



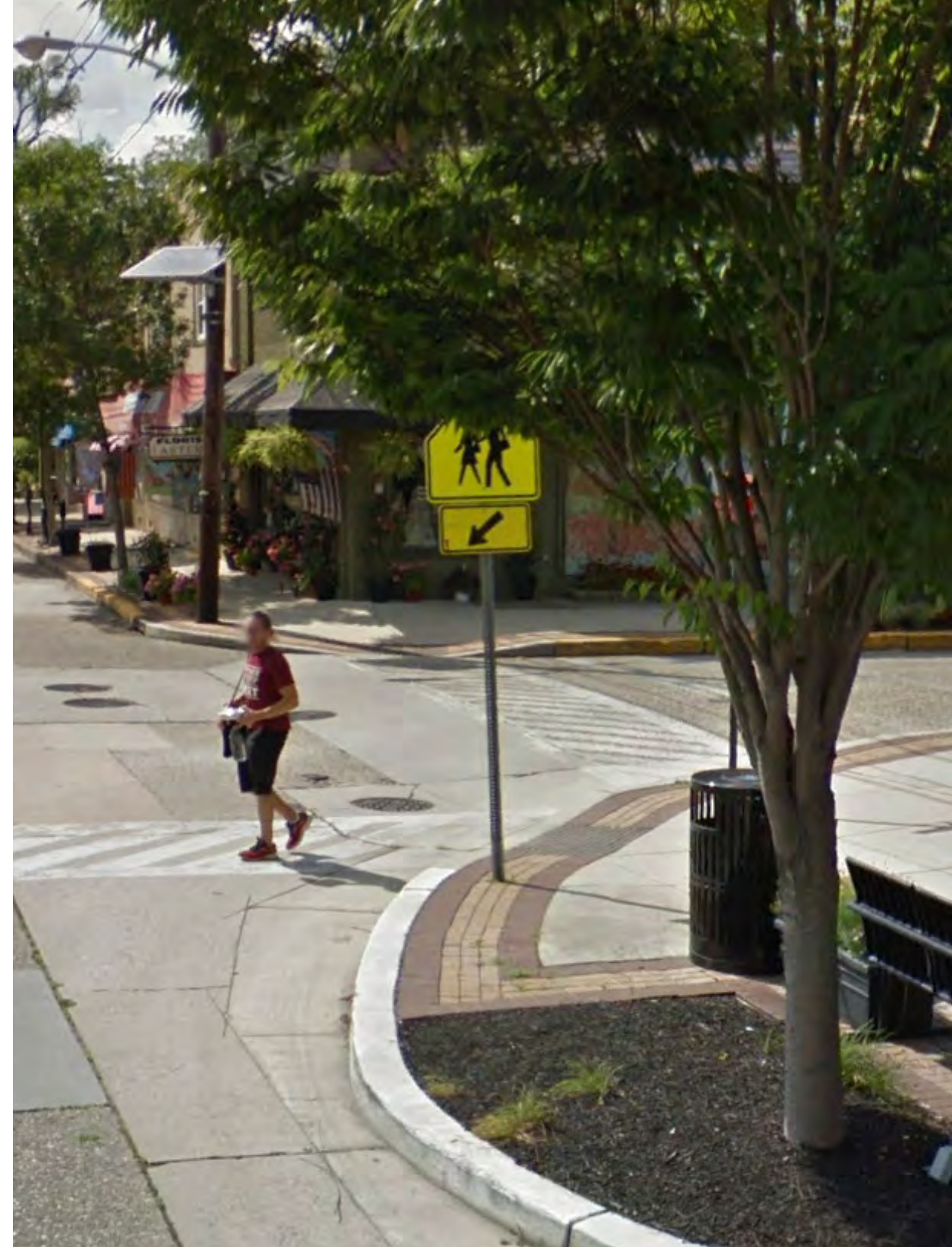
PRESENT DAY VIEW

1959 WIDENING OF HADDON AVE

INITIAL OBSERVATIONS

WALKING

- Both towns have a pre-automobile fabric, built at the time when most people walked to their destinations.
- Haddon Avenue is a strong retail corridor, forming the spine of both lively suburban downtowns.



INITIAL OBSERVATIONS

WALKING

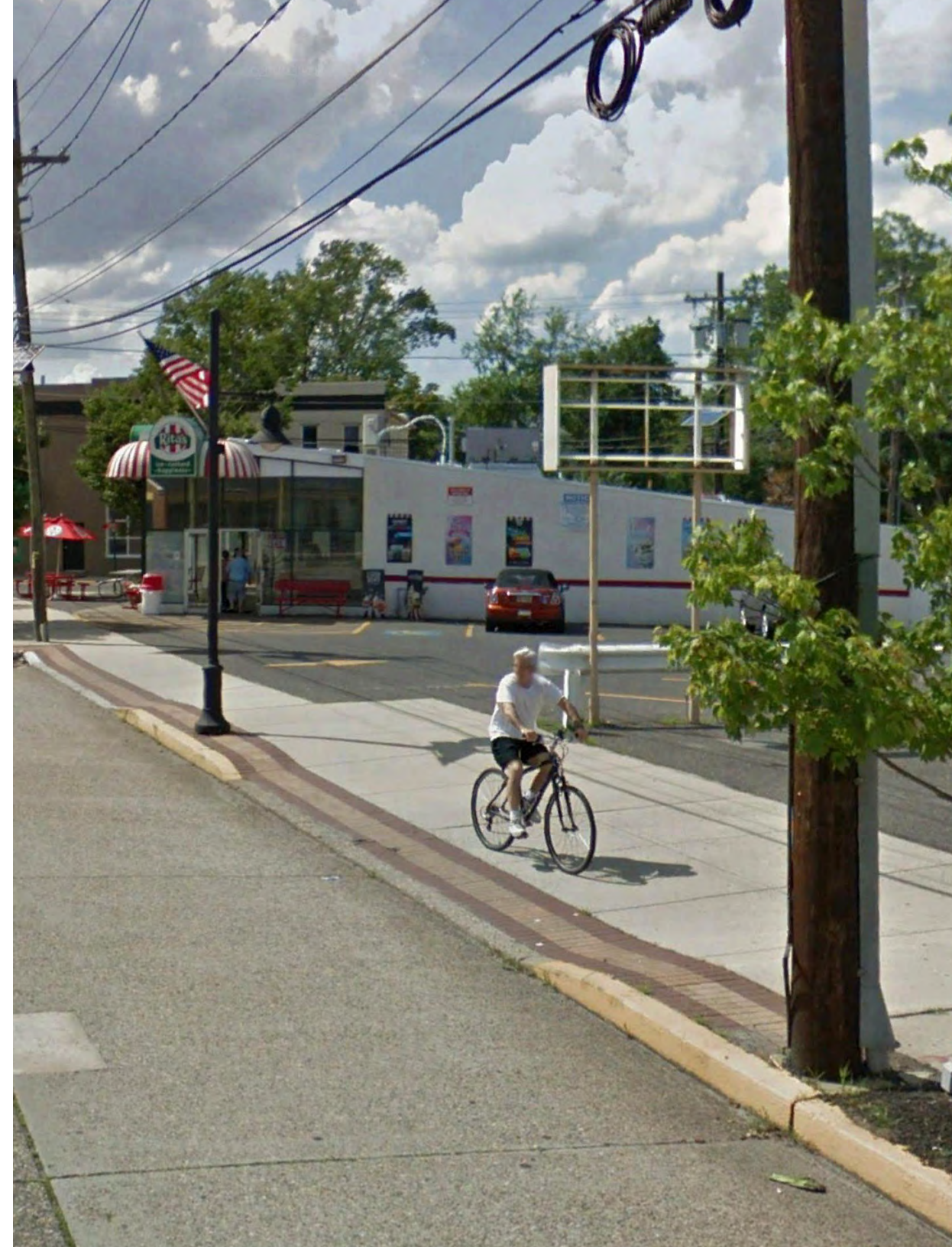
- **PATCO stations are well-placed for walking, but surrounded by infrastructure designed primarily for ‘park and riders.’**
- **Walking infrastructure is mostly present throughout the towns, but its condition varies.**



INITIAL OBSERVATIONS

BIKING

- Ample parks and waterways create appealing opportunities for recreational cycling.
- Bicycling infrastructure is scarce, and where it exists, it is almost exclusively intended for recreation.



INITIAL OBSERVATIONS

BIKING

- Lack of on-street infrastructure makes it difficult to cycle for transportation.
- Availability of bicycle parking is a relative strength.
- Collingswood Bike Share

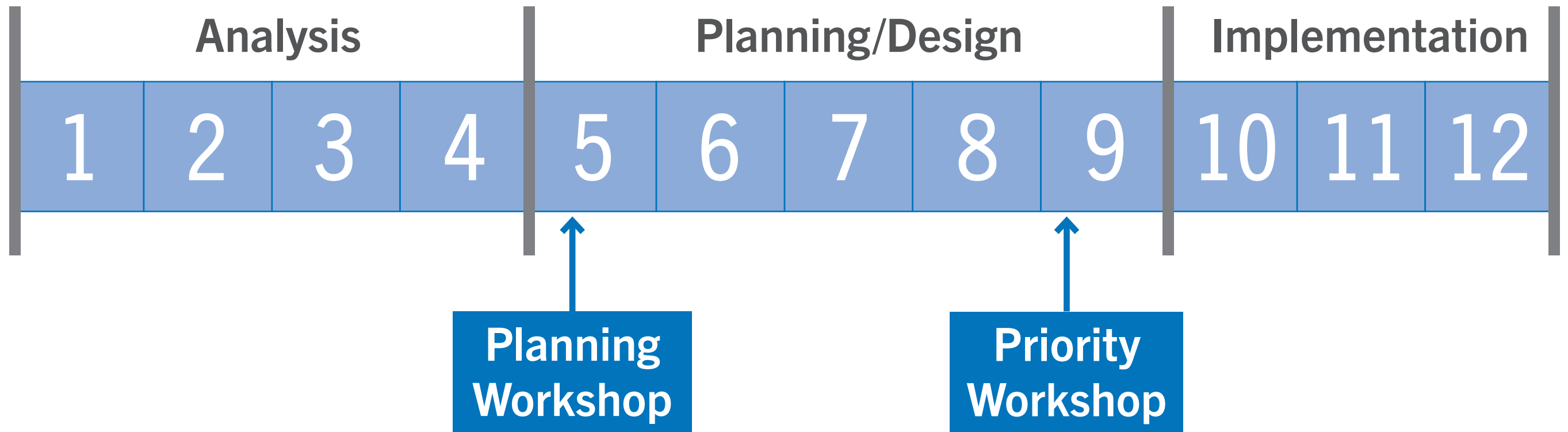


INITIAL FEEDBACK - GREEN FESTIVALS



PROJECT SCHEDULE

- Created a Website with Survey and Interactive Map
- Finishing Existing Conditions / Data Collection
- Continue Stakeholder Interviews
- Return to the Public by the Summer



TONIGHT'S MEETING

- Visit the boards around the room
- Provide comments and feedback
- If you have questions please find anyone with a nametag!

CONTACT INFO:

Douglas Robbins, AICP, PP

AECOM

douglas.robbins@aecom.com

215-789-2082